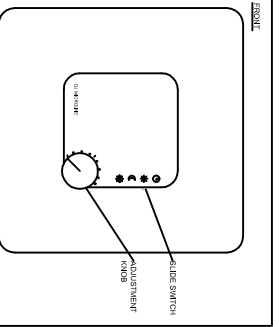
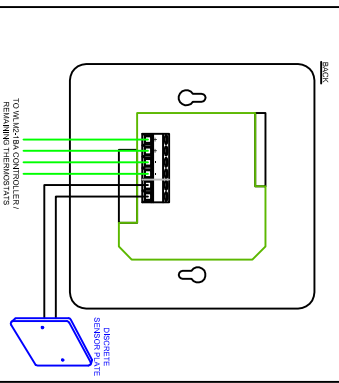


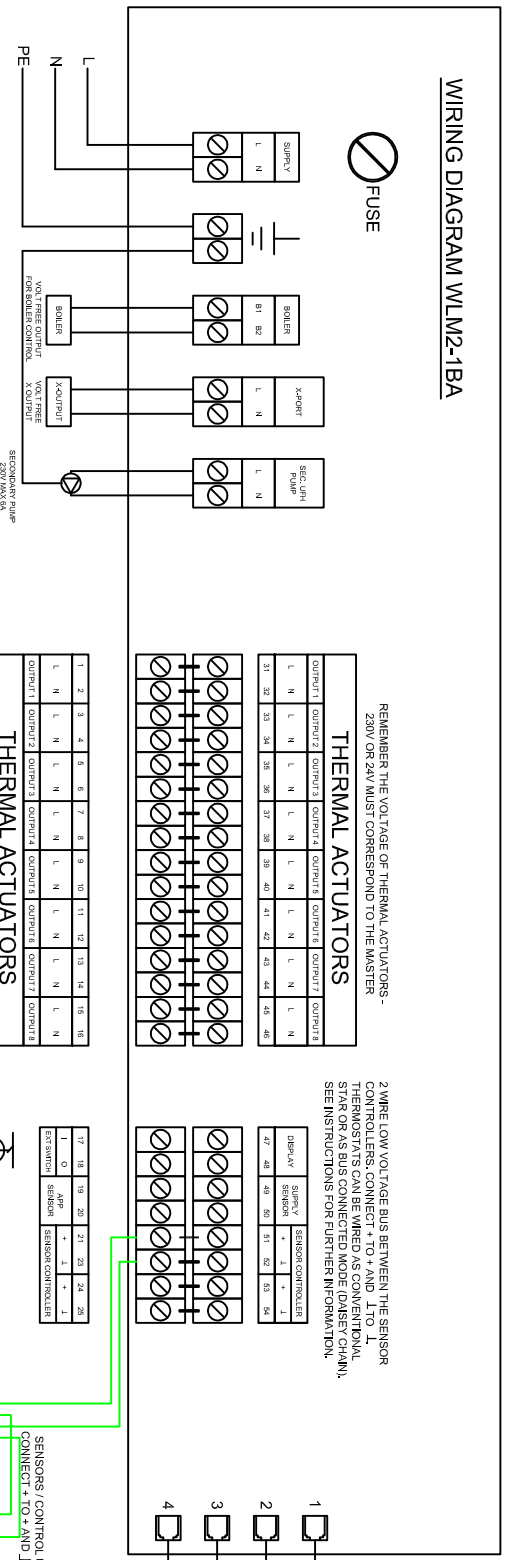
OJ ELECTRONICS



WLTM-19 THERMOSTAT



WIRING DIAGRAM WLM2-1BA



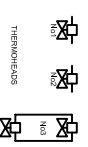
REMEMBER THE VOLTAGE OF THERMAL ACTUATORS - 230V OR 24V MUST CORRESPOND TO THE MASTER

2 WIRE LOW VOLTAGE BUS BETWEEN THE SENSOR CONTROLLERS CONNECT TO A AND L TO THERMOSTATS CAN BE WIRED AS CONVENTIONAL STAR OR AS BUS CONNECTED MODE (DENSEY CHAIN). SEE INSTRUCTIONS FOR FURTHER INFORMATION.

THERMAL ACTUATORS											
OUTPUT 1	OUTPUT 2	OUTPUT 3	OUTPUT 4	OUTPUT 5	OUTPUT 6	OUTPUT 7	OUTPUT 8	OUTPUT 9	OUTPUT 10	OUTPUT 11	OUTPUT 12
L	N	L	N	L	N	L	N	L	N	L	N
31	32	33	34	35	36	37	38	39	40	41	42
43	44	45	46	47	48	49	50	51	52	53	54

THERMAL ACTUATORS											
OUTPUT 1	OUTPUT 2	OUTPUT 3	OUTPUT 4	OUTPUT 5	OUTPUT 6	OUTPUT 7	OUTPUT 8	OUTPUT 9	OUTPUT 10	OUTPUT 11	OUTPUT 12
L	N	L	N	L	N	L	N	L	N	L	N
57	58	59	60	61	62	63	64	65	66	67	68
69	70	71	72	73	74	75	76	77	78	79	80

THERMAL ACTUATORS											
OUTPUT 1	OUTPUT 2	OUTPUT 3	OUTPUT 4	OUTPUT 5	OUTPUT 6	OUTPUT 7	OUTPUT 8	OUTPUT 9	OUTPUT 10	OUTPUT 11	OUTPUT 12
L	N	L	N	L	N	L	N	L	N	L	N
81	82	83	84	85	86	87	88	89	90	91	92
93	94	95	96	97	98	99	100	101	102	103	104



TIMER WIRED FREE CONTACTS, OPEN CONTACTS FOR NIGHT SET-BACK

THERMAL ACTUATORS											
OUTPUT 1	OUTPUT 2	OUTPUT 3	OUTPUT 4	OUTPUT 5	OUTPUT 6	OUTPUT 7	OUTPUT 8	OUTPUT 9	OUTPUT 10	OUTPUT 11	OUTPUT 12
L	N	L	N	L	N	L	N	L	N	L	N
101	102	103	104	105	106	107	108	109	110	111	112

